

## **What is a children's intensive care unit?**

This is a hospital ward where very poorly children are looked after by lots of special doctors and nurses.

## **What is PICANet?**

PICANet is a project, paid for by the Government and run by the Universities of Leeds and Leicester.

## **What does PICANet do?**

PICANet collects lots of information on children and how they are looked after in children's intensive care units in England and Wales. We look at the information, so that we can give all sorts of facts and figures to people who work in hospitals and healthcare.

## **Why is PICANet important?**

We need this information, so that we can try and help to improve the care of all children who are looked after in children's intensive care units in the future.

## **What information is needed?**

Information about you, such as your name, your birthday and your hospital number, helps us to follow your progress, for instance, if you are moved to a different children's intensive care unit.

We also collect information about why you are in hospital and how you are looked after.

## **How is information collected?**

People who work at the hospital fill in a form, using information from your hospital notes. This information is then put onto a computer in the hospital and sent to the University of Leeds, where it is kept on a safe computer.

PICANet collects the same information on all children who are looked after in a children's intensive care unit. We get information on a lot of children, about 15,000 each year. This means that we can look at what is happening across the whole country and not just in your hospital.

## **What happens to my information?**

The information is used to help people write reports. These can then help doctors and nurses to decide the best way to look after children in intensive care.

No-one will be able to tell that your details are in the report, as we do not use any names or details that might identify you.

## **Will my information be safe?**

All information is kept in a safe room on a computer. No one can see the information, unless it is their job to look.

## **Do I have to be included?**

No, if you do not want your information to be included in the project, please tell your doctor or nurse. They will then make sure that no personal details are sent to PICANet.

Your decision will not change how you are looked after in this or any other hospital.

## **Where can I get more information?**

If you have any questions about PICANet you can:

- ☞ ask your nurse or doctor for more information;
- ☞ visit the PICANet website at [www.picanet.org.uk](http://www.picanet.org.uk);
- ☞ call someone who works for PICANet on one of the telephone numbers over the page;
- ☞ send us an email (the addresses are over the page).

## PICANet contact information:

Website: [www.picanet.org.uk](http://www.picanet.org.uk)  
Email: [picanet@leeds.ac.uk](mailto:picanet@leeds.ac.uk)

✉ **Patricia McKinney, Roger Parslow, Sarah Skinner & Tom Fleming**  
PICANet  
Paediatric Epidemiology Group  
Centre for Epidemiology & Biostatistics  
The Leeds Institute of Genetics, Health & Therapeutics  
University of Leeds  
8.49 Worsley Building  
Leeds, LS2 9JT

[p.a.mckinney@leeds.ac.uk](mailto:p.a.mckinney@leeds.ac.uk)

☎ 0113 343 4842

[r.c.parslow@leeds.ac.uk](mailto:r.c.parslow@leeds.ac.uk)

☎ 0113 343 4856

[s.skinner@leeds.ac.uk](mailto:s.skinner@leeds.ac.uk)

[t.j.fleming@leeds.ac.uk](mailto:t.j.fleming@leeds.ac.uk)

☎ 0113 343 8125

✉ **Elizabeth Draper & Caroline Lamming**  
PICANet  
Department of Health Sciences  
University of Leicester  
22 -28 Princess Road West  
Leicester LE1 6TP

[msn@leicester.ac.uk](mailto:msn@leicester.ac.uk)

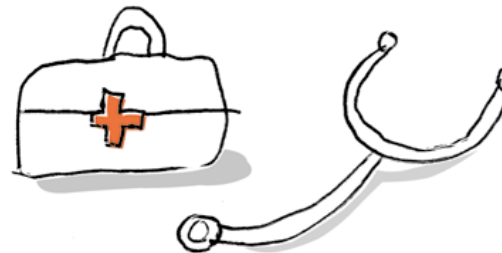
☎ 0116 252 3200

[crl4@le.ac.uk](mailto:crl4@le.ac.uk)

☎ 0116 252 5414

## Contact information (continued)

✉ **Krish Thiru (Pan Thames**  
Co-ordinator)  
PICANet  
Cardiorespiratory and Critical Care  
Division  
Room 8086, Level 8 – Nurses Home  
Great Ormond Street Hospital for Children  
Great Ormond Street  
London WC1 3JH  
[thiruk1@gosh.nhs.uk](mailto:thiruk1@gosh.nhs.uk)  
☎ 020 7762 6713



## Paediatric Intensive Care Audit Network

Information leaflet for  
children admitted to  
paediatric intensive care



Drawn by Zoe aged 8

Version 5.0 June 2008