

### **What does PICANet do?**

PICANet collects information on all children who are admitted to a paediatric (children's) intensive care unit. You don't need to do anything for your child to be included.

### **Why is PICANet important?**

The information that we collect for PICANet is helping to find out the best ways to treat and care for children who are ill, so that intensive care services can be better planned for and provided.

### **How is PICANet funded?**

Funding is provided by the Healthcare Quality Improvement Partnership, Health Commission Wales Specialised Services, NHS Lothian / National Service Division NHS Scotland and The Royal Belfast Hospital for Sick Children.

### **What information is needed?**

PICANet collects exactly the same information on all children cared for in paediatric intensive care units.

Personal details, like name and date of birth, help us to follow your child's progress, if they are moved to another paediatric intensive care unit. Information

about your child's care, treatment and condition is also collected.

We can use your postcode to help plan future paediatric intensive care services in your area.

### **How is information collected?**

A member of staff records details about your child's condition or illness onto a form from information in their medical notes. This information is then put onto a computer, sent to the University of Leeds and kept there on a computer.

### **Will the information be safe?**

We send all information in a very safe way and keep it stored confidentially on a main computer, which is kept in a safe room. No-one can see the information, unless it is their job to do so.

There is no way at all that your child can be identified in any of our reports.

### **What will the information be used for?**

We use the information to help us write reports and to decide what further information on children's intensive care is needed to help hospitals plan for the future.

Because we collect a lot of information, it means that we can look at what is happening all over the country and not just in this hospital.

We have linked up with the Office of National Statistics, so that we can see how your child's health is, after they have left the intensive care unit.

### **What have we found out so far?**

During the past few years, we have shown that about 15,000 children are admitted to paediatric intensive care units in England, Wales and Scotland. Almost half of these children are less than one year old. This type of information is useful, because it helps the hospitals and the people who plan health services to know what to expect and to be better prepared.

### **Does my child have to be included?**

If you do not want information on your child included in PICANet, please tell the nurse or doctor caring for your child. Your decision will not alter the care your child receives in this, or any other hospital.

## Where can I get more information?

If you have any questions about PICANet you can:

- ask your child's nurse or doctor for more information
- visit the PICANet website (see below)
- email PICANet (see below)
- contact a member of the PICANet team on one of the telephone numbers below

## PICANet contact information:

**Website:** [www.picanet.org.uk](http://www.picanet.org.uk)

**Email:** [picanet@leeds.ac.uk](mailto:picanet@leeds.ac.uk)

✉ **Patricia McKinney, Roger Parslow, Sarah Skinner & Tom Fleming**  
PICANet  
Paediatric Epidemiology Group  
Centre for Epidemiology & Biostatistics  
The Leeds Institute of Genetics, Health & Therapeutics  
8.49 Worsley Building  
The University of Leeds  
Leeds, LS2 9JT

[p.a.mckinney@leeds.ac.uk](mailto:p.a.mckinney@leeds.ac.uk)

☎ 0113 343 4842

[r.c.parslow@leeds.ac.uk](mailto:r.c.parslow@leeds.ac.uk)

☎ 0113 343 4856

[s.skinner@leeds.ac.uk](mailto:s.skinner@leeds.ac.uk)

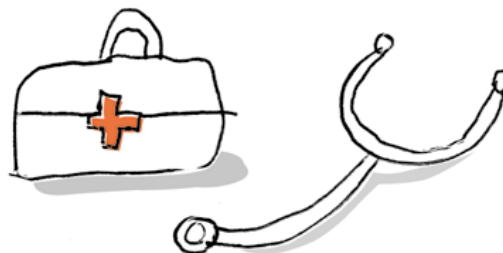
[t.j.fleming@leeds.ac.uk](mailto:t.j.fleming@leeds.ac.uk)

☎ 0113 343 8125

## Contact information (cont)

✉ **Elizabeth Draper & Caroline Lamming**  
PICANet  
Department of Health Sciences  
University of Leicester  
22 -28 Princess Road West  
Leicester LE1 6TP  
[msn@leicester.ac.uk](mailto:msn@leicester.ac.uk)  
☎ 0116 252 3200  
[cr14@le.ac.uk](mailto:cr14@le.ac.uk)  
☎ 0116 252 5414

✉ **Krish Thiru**  
Pan Thames Co-ordinator  
PICANet  
Cardiorespiratory and Critical Care  
Division  
Room 8086, Level 8 – Nurses Home  
Great Ormond Street Hospital for  
Children  
Great Ormond Street  
London WC1 3JH  
[thiruk1@gosh.nhs.uk](mailto:thiruk1@gosh.nhs.uk)  
☎ 020 7762 6713



## Paediatric Intensive Care Audit Network

Information leaflet for  
parents, families and  
guardians of children  
admitted to paediatric  
intensive care



Drawn by Zoe aged 8

Version 5.0 June 2008